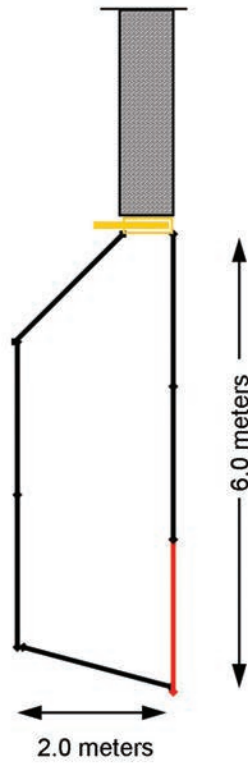










# 5 HEAD YARDS

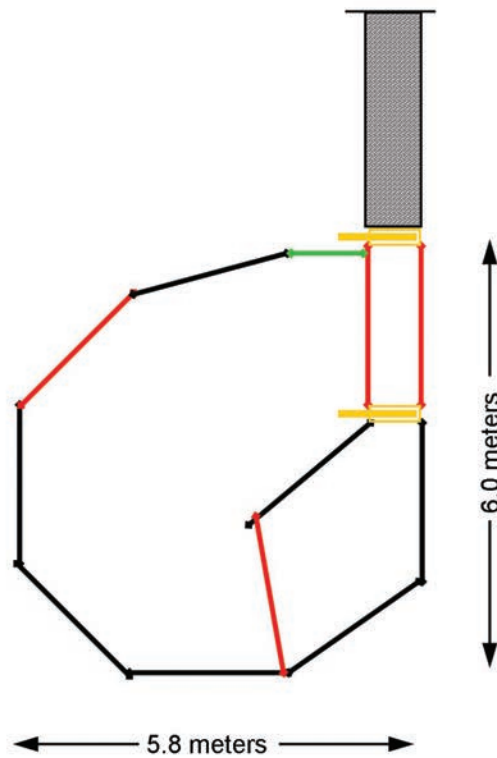


Legend		No	Product	QtyReq	Unit Amount \$	Total Amount \$
	Short Crush	1.	3.0 m Loading Ramp	1	\$	\$
	Vet Crush	2.	Sliding Gate	1	\$	\$
	3.0 m Loading Ramp	3.	2.0 m Gate in Frame	1	\$	\$
	2.0 m Panel	4.	2.0 m in Panel	6	\$	\$
	2.0 m Gate in Frame	5.			\$	\$
	1.0 m Gate in Frame	6.			\$	\$
	Slide Gate	7.			\$	\$
	Race Bow	8.	Delivery		\$	\$
<b>Total Amount for yards Inc GST</b>						\$

NB capacities and dimensions stated are approximate

Notes:

# 5-8 HEAD YARDS

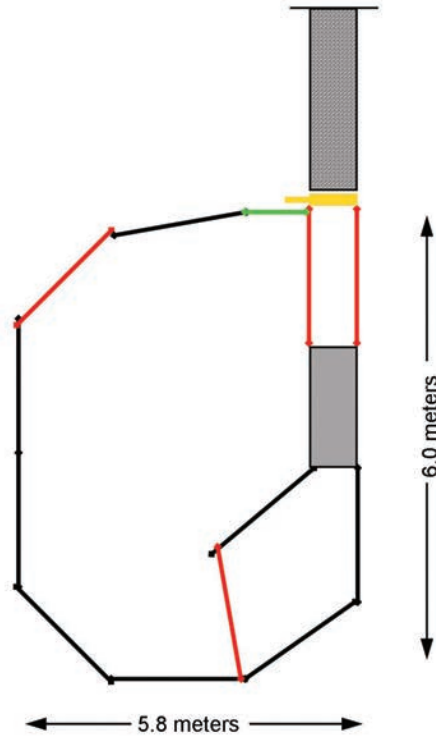


Legend		No	Product	QtyReq	Unit Amount \$	Total Amount \$
	Short Crush	1.	3.0 m Loading Ramp	1	\$	\$
	Vet Crush	2.	Sliding Gate	2	\$	\$
	3.0 m Loading Ramp	3.	2.0 m Gate in Frame	4	\$	\$
	2.0 m Panel	4.	1.0 Gate in Frame	1	\$	\$
	2.0 m Gate in Frame	5.	2.0 m Panel	7	\$	\$
	1.0 m Gate in Frame	6.			\$	\$
	Slide Gate	7.			\$	\$
	Race Bow	8.	Delivery		\$	\$
<b>Total Amount for yards Inc GST</b>						<b>\$</b>

NB capacities and dimensions stated are approximate

Notes:

# 10-15 HEAD YARDS

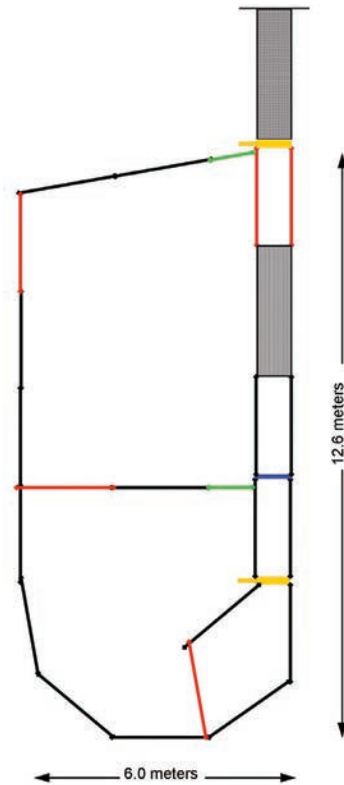


Legend		No	Product	QtyReq	Unit Amount \$	Total Amount \$
	Short Crush	1.	3.0 m Loading Ramp	1	\$	\$
	Vet Crush	2.	Short Crush	1	\$	\$
	3.0 m Loading Ramp	3.	Sliding Gate	2	\$	\$
	2.0 m Panel	4.	2.0 m Gate in Frame	5	\$	\$
	2.0 m Gate in Frame	5.	1.0 m Gate in Frame	2	\$	\$
	1.0 m Gate in Frame	6.	2.0 m Panel	12	\$	\$
	Slide Gate	7.			\$	\$
	Race Bow	8.	Delivery		\$	\$
<b>Total Amount for yards Inc GST</b>						\$

NB capacities and dimensions stated are approximate

Notes:

# 25-35 HEAD YARDS

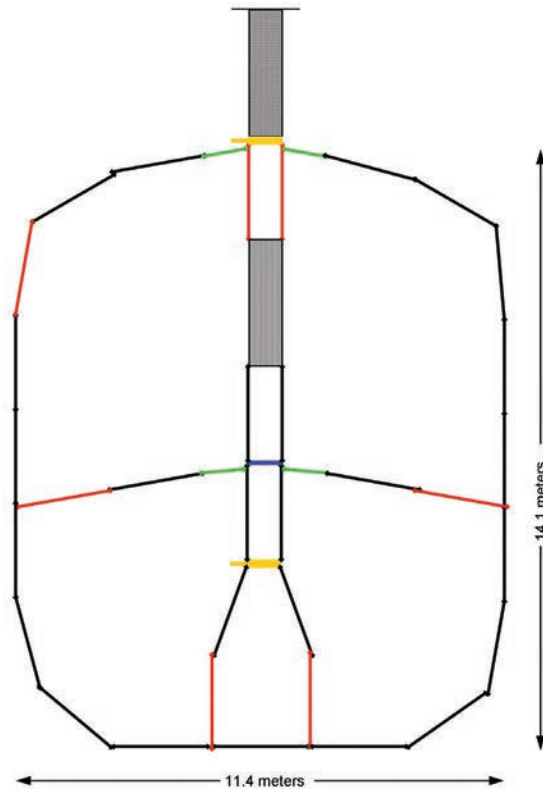


Legend		No	Product	QtyReq	Unit Amount \$	Total Amount \$
	Short Crush	1.	3.0 m Loading Ramp	1	\$	\$
	Vet Crush	2.	Vet Crush	1	\$	\$
	3.0 m Loading Ramp	3.	Sliding Gate	2	\$	\$
	2.0 m Panel	4.	2.0 m Gate in Frame	5	\$	\$
	2.0 m Gate in Frame	5.	1.0 m Gate in Frame	2	\$	\$
	1.0 m Gate in Frame	6.	2.0 m Panel	16	\$	\$
	Slide Gate	7.	Race Bow	1	\$	\$
	Race Bow	8.	Delivery		\$	\$
<b>Total Amount for yards Inc GST</b>						\$

NB capacities and dimensions stated are approximate

Notes:

# 55-65 HEAD YARDS

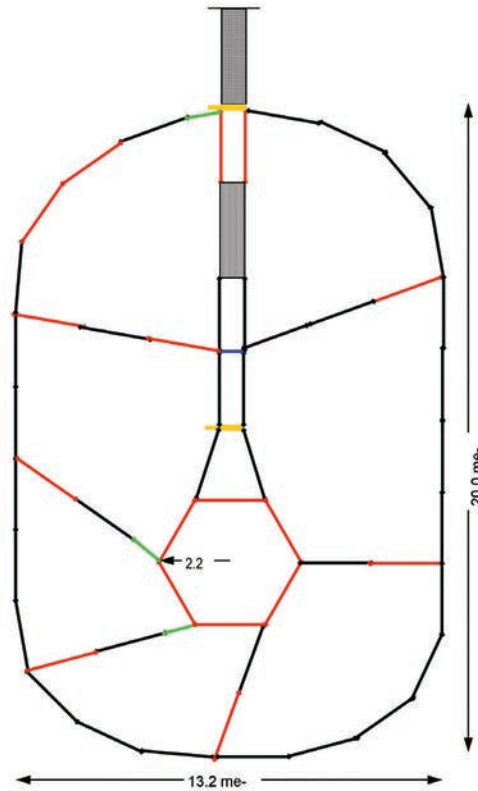


Legend		No	Product	QtyReq	Unit Amount \$	Total Amount \$
	Short Crush	1.	3.0 m Loading Ramp	1	\$	\$
	Vet Crush	2.	Vet Crush	1	\$	\$
	3.0 m Loading Ramp	3.	Sliding Gate	2	\$	\$
	2.0 m Panel	4.	2.0 m Gate in Frame	7	\$	\$
	2.0 m Gate in Frame	5.	1.0 m Gate in Frame	4	\$	\$
	1.0 m Gate in Frame	6.	2.0 m Panel	26	\$	\$
	Slide Gate	7.	Race Bow	1	\$	\$
	Race Bow	8.	Delivery		\$	\$
<b>Total Amount for yards Inc GST</b>						\$

NB capacities and dimensions stated are approximate

Notes:

# 90-120 HEAD YARDS

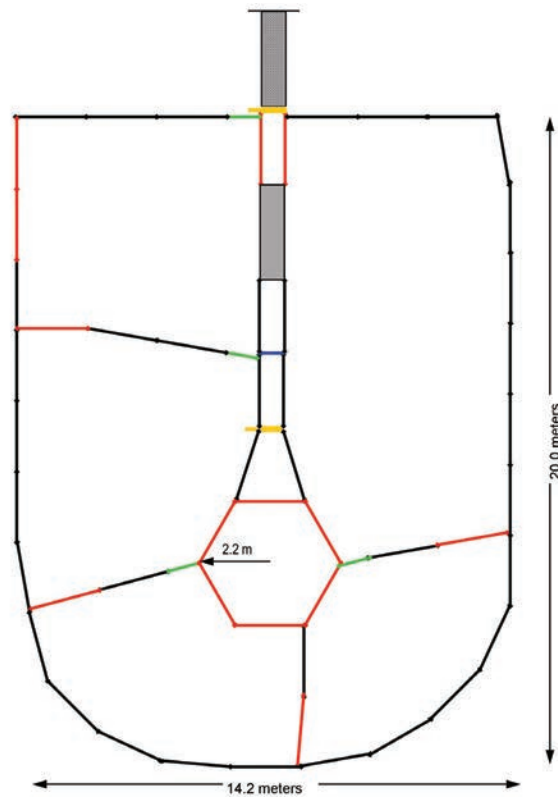


Legend		No	Product	QtyReq	Unit Amount \$	Total Amount \$
	Short Crush	1.	3.0 m Loading Ramp	1	\$	\$
	Vet Crush	2.	Vet Crush	1	\$	\$
	3.0 m Loading Ramp	3.	Sliding Gate	2	\$	\$
	2.0 m Panel	4.	2.0 m Gate in Frame	17	\$	\$
	2.0 m Gate in Frame	5.	1.0 m Gate in Frame	3	\$	\$
	1.0 m Gate in Frame	6.	2.0 m Panel	36	\$	\$
	Slide Gate	7.	Race Bow	1	\$	\$
	Race Bow	8.	Delivery		\$	\$
<b>Total Amount for yards Inc GST</b>						\$

NB capacities and dimensions stated are approximate

Notes:

# 120-150 HEAD YARDS

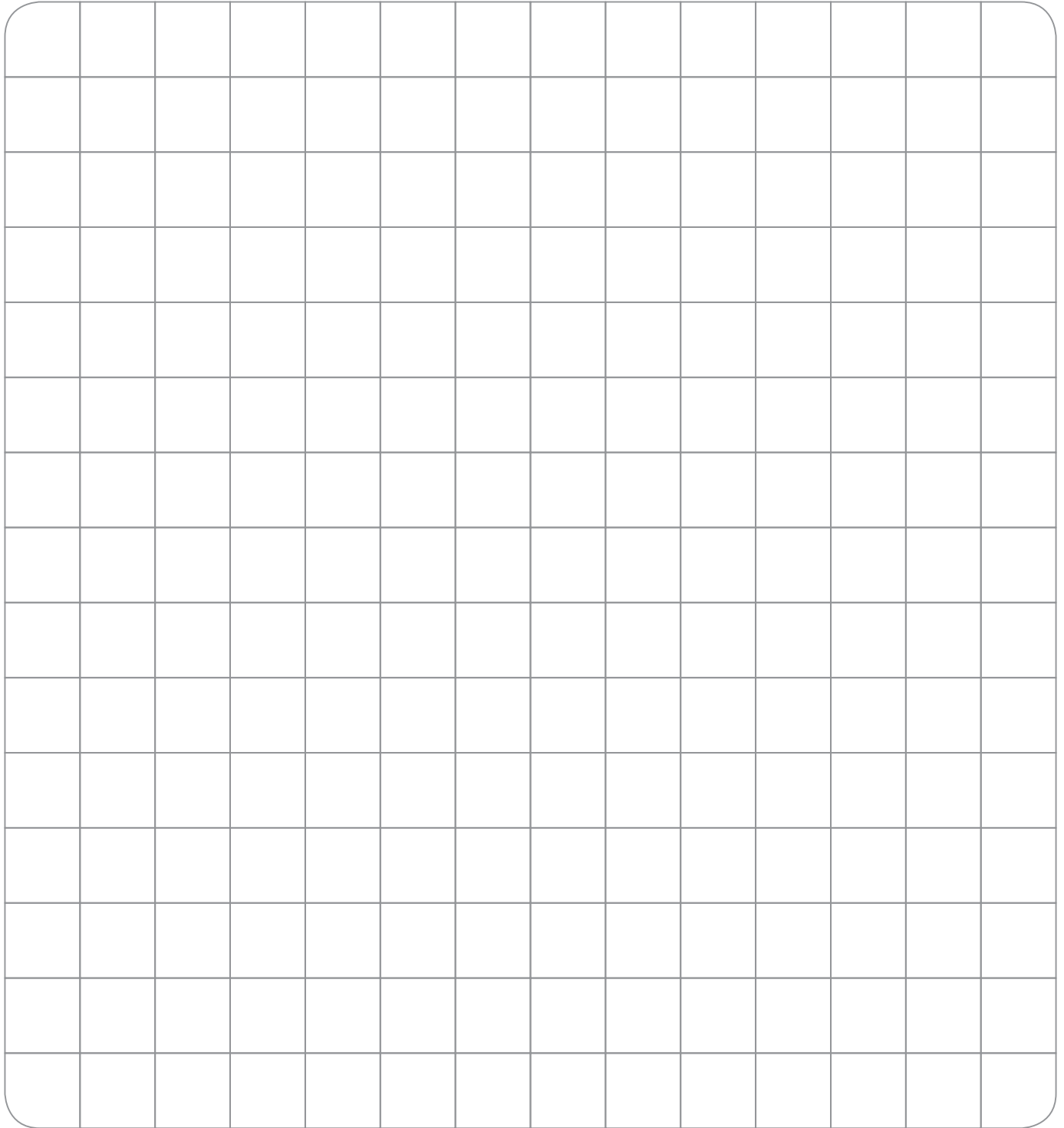


Legend		No	Product	QtyReq	Unit Amount \$	Total Amount \$
	Short Crush	1.	3.0 m Loading Ramp	1	\$	\$
	Vet Crush	2.	Vet Crush	1	\$	\$
	3.0 m Loading Ramp	3.	Sliding Gate	2	\$	\$
	2.0 m Panel	4.	2.0 m Gate in Frame	12	\$	\$
	2.0 m Gate in Frame	5.	1.0 m Gate in Frame	4	\$	\$
	1.0 m Gate in Frame	6.	2.0 m Panel	38	\$	\$
	Slide Gate	7.	Race Bow	1	\$	\$
	Race Bow	8.	Delivery		\$	\$
<b>Total Amount for yards Inc GST</b>						<b>\$</b>

NB capacities and dimensions stated are approximate

Notes:

# Sketch a Plan to suit



1m grid

Notes: